



Encoders for **CONSTRUCTION & AGRICULTURE**

Stationary and Mobile Equipment



Your responsive experts in motion control

ENCODER.COM

Encoders for Construction

POSITION. SPEED. SAFETY. BUILT FOR HARSH ENVIRONMENTS.

Mobile equipment depends on accurate motion feedback to operate safely and efficiently. Encoder Products Company (EPC) delivers CANopen Safety and absolute encoder solutions designed for cranes, booms, asphalt plants, and autonomous construction vehicles — even in the harshest environments.

Where Encoders Are Used

Cranes & Booms

- **Boom Angle Feedback:** CANopen Safety Encoder
- **Boom Length Feedback:** Draw Wire Encoder
- **Slew Rotation Position:** Slew Ring Software
- **Winch Hoist Rotation:** A58 & A36 Absolute Encoders
- **Outrigger Position:** Draw Wire Encoder

Asphalt Plant Automation

- **Zero-Speed Detection:** 25T & 702 Incremental Encoders
- **Bucket Elevator Speed:** 25T & 702 Incremental Encoders

Autonomous Construction Vehicles

- **Superstructure position on ring gear:** A58 & A36 Absolute Encoders

Safe Encoder Output for Autonomous Mobile Equipment



SUPERSTRUCTURE POSITION

A58
Absolute Encoder

A36
Absolute Encoder

OUTRIGGER POSITION

BOOM LENGTH

LCX
Draw Wire Encoder

BOOM ANGLE

TRT42/S3 with Measuring Gear
Rotary Safety Encoder

WINCH HOIST ROTATION

SLEW ROTATION POSITION

BUCKET ELEVATOR SPEED

ZERO-SPEED DETECTION

25T
Incremental Encoder

Functional Safety for Critical Motion

When motion impacts people, loads, and equipment, functional safety matters.

- Safety-rated position and speed feedback/monitoring
- CANopen Safety protocol
- Designed for boom, lift, and slew axes
- Supports overload protection and collision avoidance

SIL2
SIL3
PLd
PLe
CAT3

Reliable Absolute Feedback—No Homing Required

EPC's A36 and A58 absolute encoders deliver precise position feedback for mobile control systems that power on and off in the field. Commonly used for steering and articulation, conveying and material handling, as well as drive motors and rotation axes.

A36

- Compact, versatile design
- CANopen, J1939, SSI, and IO-Link

A58

- Heavy-duty sealing, up to IP69K
- Built for harsh, outdoor environments



Need Help Choosing the Right Encoder?

EPC helps match the right encoder technology — safety-rated or standard — to your mobile equipment application.



Encoders for Agriculture

In today's precision agriculture, reliable motion feedback is key to automation, efficiency, and smarter farming. From steering angle control and harvesting systems, encoders deliver the real-time data that keeps modern farm equipment operating accurately. EPC offers rugged, customizable encoder solutions built to withstand dust, mud, vibration, and extreme weather, perfect for the demands of agricultural machinery.

Where Encoders Are Used

Autonomous Tractors

- *Implement and Attachment Control: 15T Incremental Shaft Encoder*

Self-Propelled Sprayers

- *Position Tracking: A58SBS IP69K Stainless Steel Absolute Encoder*

Combines & Harvesters

- *Steering Angle Feedback: CANopen Safety Encoder*

Boom Control

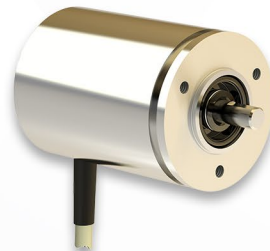
- *Automated Sprayer Boom Control: A58 & A36 Absolute Encoders*



15T
Incremental Encoder

CANopen
safety easy to use

TBN/TRN/TMN
Safety Encoder



A58SBS
IP69K Absolute Encoder



ATTACHMENT CONTROL

IMPLEMENT CONTROL

STEERING ANGLE FEEDBACK

POSITION TRACKING

Quality You Can Rely On. Outstanding Value.

Replacement Encoders

In four easy steps, EPC can cross-reference almost any competitor's encoder to get you back up and running with an EPC encoder.

Learn More



**Need more help?
Contact us!**

