

# DRAW WIRE SOLUTIONS

*EPC's Model LCX offers draw wire solutions for reliable motion feedback*

Encoder Products Company's new Model LCX Series draw wire units are available in 3 housing sizes, and work with EPC encoders to accurately measure position and provide motion feedback in motion control applications. The Model LCX offers:

- Wire length options from 1 to 42.5 meters
- Linearity  $\pm 0.05$  % of full range (with encoder)
- Temperature range  $-20^{\circ}\text{C}$  to  $85^{\circ}\text{C}$
- Optional low temperature range of  $-40^{\circ}\text{C}$
- Flexible stainless steel wire
- Optional high corrosion protection: standard housing, V4A wire material, stainless steel bearings, and HARTCOAT® coating on wire drum



*Model LCX135 shown with optional mounting brackets*

***The Model LCX is available in 3 housing sizes.***

## MODEL LCX80

80 mm casing with 1, 2 and 3 meter wire length options



## MODEL LCX120

120 mm casing with 4 or 5 meter wire length options



## MODEL LCX135

135 mm casing with wire lengths from 6 to 42.5 meters



# MODEL LCX DRAW WIRE

*EPC encoders compatible with LCX Draw Wire units*

***Installation of a Model LCX draw wire unit is quick and simple with these EPC encoders, configured specifically to function easily with the Model LCX.***



## MODEL A58SE

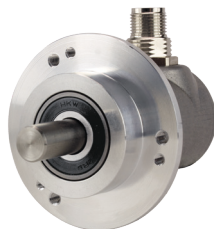
- Ethernet-ready absolute encoder
- MH clamping flange
- 10 mm shaft



EtherCAT  

## MODEL A58SB

- Bus absolute encoder
- MH clamping flange
- 10 mm shaft



CANopen  

## MODEL 758

- **High performance** incremental encoder
- Clamping flange 20 Type (A)
- 10 mm shaft



## MODEL 858S

- **Stainless steel** incremental encoder
- Clamping flange 20 Type (A)
- 10 mm shaft



*Not sure which motion feedback is right for your application? Give us a call. When you call EPC, you talk to real engineers and encoder experts who can help you specify the right encoder solution for your motion control application. Call EPC today.*

