

Small Motor Motion Feedback Solutions

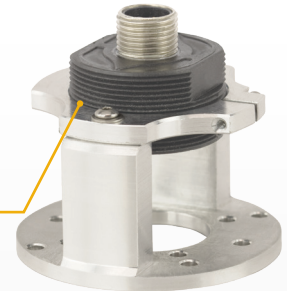
Model 30M

Non-contact magnetic sensing for stepper, BLDC motors, and more.



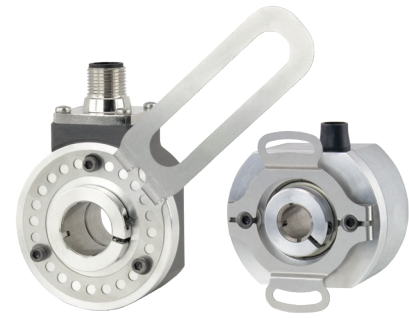
Model 30MT

The Model 30MT comes with a threaded housing for a simple installation.



Model 15T

The compact Model 15T fits into tight spaces while delivering high performance.



Model 260

The Model 260 can be fitted to a wide range of motor frame sizes and mounting patterns.

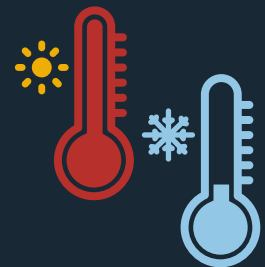
Anti-Rotation Flex Mounts

Anti-rotation flex mounts are engineered for a balance of flexibility and stiffness. Flex mounts keep thru-bore and blind hollow bore encoders from rotating on shafts, and accommodate shaft endplay and runout, preserving bearing life.



Temperature extremes are no problem

EPC's encoders have temperature options that range from -40° C to 120° C.



Encoder Solutions for Small Motor Applications

EPC small motor encoder solutions deliver reliable high performance feedback in compact housings. Our feature-rich designs allow for the specification of encoders that perfectly match application criteria.

Resolution	<i>EPC's small motor encoders feature resolutions from 1 to 10,000 CPR, plus commutation. Interpolated resolutions maintain a clean waveform with no degradation in accuracy.</i>
High Temp Environments	<i>All of EPC's small motor encoders have temperature options up to 100° C. Models 15T and 260 have an extreme temp option up to 120° C.</i>
Mounting & Installation	<i>EPC small motor solutions offer bore sizes and flex mounts that readily accommodate common BLDC, stepper, and servo motor frames.</i>

MODEL 15T/H

Low profile – 1.5" diameter (38 mm) and 1.0" depth (25.4 mm)

- Resolutions to 10,000 CPR
- Available in thru-bore or blind hollow bore
- Bore sizes from 3/16" to 3/8" or 4 mm to 10 mm
- Up to 12 pole commutation for brushless motor control
- High tolerance to axial misalignment or radial shaft runout
- Simple, innovative flex mounting system
- Operating temps: -40° to 120° C
- Sealing to IP64



MODELS 30M / 30MT

Magnetic encoder modules

- Resolutions to 1024 CPR (4096 PPR with quadrature counting)
- Compact 30 mm (1.18") diameter housing
- Optional 2 pole or 32 pole commutation
- Large air gap and tolerance to misalignment
- Threaded housing for built-in alignment (Model 30MT)
- Operating temps: -40° to 120° C
- **Sealing to IP69K**



MODEL 121

Auto-aligning modular encoder for simple, hassle-free mounting

- Resolutions to 2500 CPR
- Patented auto-aligning mounting
- Up to 12 pole commutation available
- Bore sizes from 1/4" to 5/8" or 5 mm to 15 mm
- Operating temps: 0° to 100° C
- Up to 30,000 RPM
- Includes IP50 dust seal kit



MODEL 260

Compact, economical encoder

- Resolutions to 10,000 CPR
- Slim profile – 2.0" diameter and 1.19" depth
- Bore sizes from 1/4" to 5/8" or 5 mm to 15 mm
- Up to 12 pole commutation
- Anti-backlash mounting system
- Operating temps: -40° to 120° C
- Sealing to IP64



Not sure which motion feedback is right for your application? Give us a call. When you call EPC, you talk to engineers and encoder experts who can help you specify the right encoder solution for your motion control application. Contact EPC today.

