

TECHNICAL BULLETIN

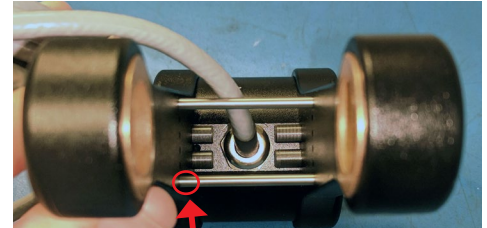
TB-526: TR3 Heavy Duty Tru-Trac® Installation



Installation

Spring Clamp Installation

1. Install Model TR3 spring clamp with screws facing up, encoder end toward you, and pivot brackets to the right. Encoder end is designated by a small hole located on the housing.
2. Install correct shaft per TR3 Installation or Double Wheel Pivot Installation.



Hole in Housing Indicating Encoder End

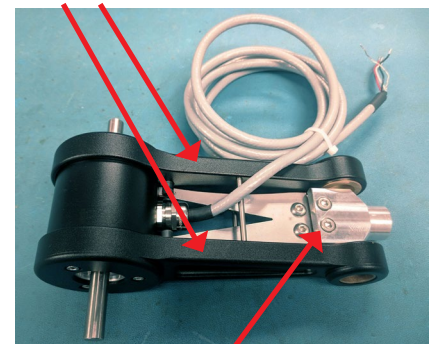
Model TR3 Installation

1. Slide Model TR3 over a fixed $\text{Ø}5/8"$ ($\text{Ø}0.625 +0/-0.005"$) shaft. The optional Model TR3 Mounting Bracket (#176389-01) is shown in the picture.
2. While rotating the Model TR3 clamp to apply a spring load, securely tighten the two clamp screws with a $5/32"$ (supplied) or 4mm hex "L" key.

Note 1: A 1/2 – 20 bolt can be threaded into the end of the clamp to aid in loading the spring as shown. If a 1/2 – 20 bolt is not handy, then a $\text{Ø}0.45"$ or smaller rod, bolt, screw driver etc. works as well.

Note 2: The spring should not be pre-loaded too much or it may come in contact with the spring limit pins and the Model TR3 will not have sufficient travel to accommodate variations in the surface height of the material being measured. For most applications, the spring setting in its mid-range (5 - 6 lbs.) is sufficient.

Pivot Brackets

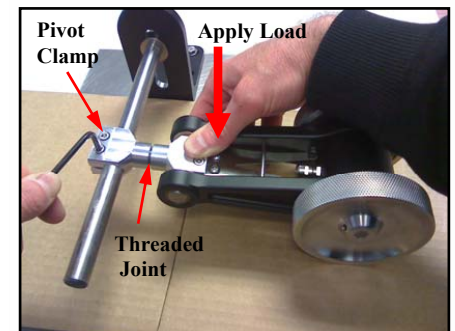
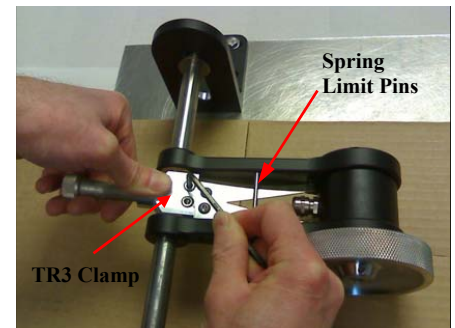


TR3 Clamp Screws

Double Wheel Pivot Installation (EPC Part# 176391-01)

Note: It is recommended that double wheel Model TR3 encoders be installed with the optional Double Wheel Pivot. The pivot allows the unit to rotate freely to maintain equal pressure on both wheels, accommodating uneven/angled surfaces and mounting misalignment.

1. Insert shaft from double pivot kit through pivot brackets and Model TR3 clamp. Center shaft, and firmly tighten Model TR3 clamp screws with a $5/32"$ (supplied) or 4mm hex "L" key.
2. Thread the pivot clamp into the end of the Model TR3's clamp by hand until the threads just bottom out then back out approximately 1 revolution to allow for rotation after installation.
3. Slide the pivot clamp over a fixed $\text{Ø}5/8"$ ($\text{Ø}0.625 +0/-0.005"$) shaft. The optional Model TR3 Mounting Bracket (#176389-01) is shown in the picture.
4. While applying a load to the spring, securely tighten the two clamp screws with a $5/32"$ (supplied) or 4mm hex "L" key.



TECHNICAL BULLETIN

TB-526: TR3 Heavy Duty Tru-Trac® Installation



Connector Exit Orientation Adjustment

1. Slide the Model TR3 over a $\varnothing 5/8"$ ($\varnothing 0.625 +0/-0.005"$) shaft and tighten the clamp screws with the supplied $5/32"$ hex "L" key.
2. Remove the measuring wheel(s) using the supplied $3/32"$ hex "L" wrench to loosen the set screws.
3. Remove 6 screws (3 on each side) from the side plates using the supplied $7/64"$ hex "L" key.
4. Rotate body of encoder to desired orientation, aligning bolt pattern with one of six unique positions (see inset drawing).
5. Replace side plate screws and measuring wheel(s), making sure to tighten screws securely.

